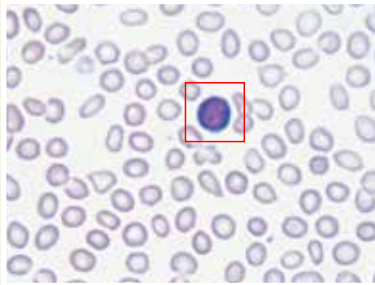


NormaVision M

Analytical blood cell image system

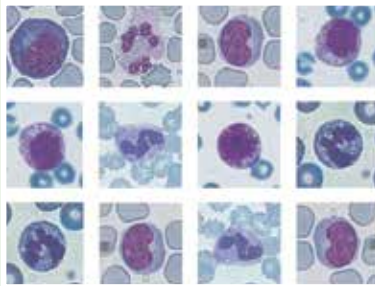
- Digital blood cell morphology for small and medium laboratories
- Help for lab technicians to find and capture blood cell images (WBC, RBC, PLT)
- Manual identification and automated pre-classification of blood cells
- Validation, database keeping and reports
- Professional development and continuous education

Blood cell analysis process



1

Manual capture of the selected blood cell images (leucocytes, erythrocytes, platelets).



2

After the capturing procedure is completed, the system starts the identification and pre-classification of blood cells.



3

Review and validation of the results by a specialist.



4

Integration of the analysis results into the report; consultation.

www.normadiagnostika.com

Norma Diagnostika GmbH

Hauptstr. 7, 3011 Untertullnerbach, Austria • Phone: +43 2233 52887 • Fax: +43 2233 5288 715

Norma Diagnostika GmbH reserves the right without notice to make any technical changes it considers necessary or desirable