



An Integrated Hematology System

to standardize and optimize the procedure of blood analysis

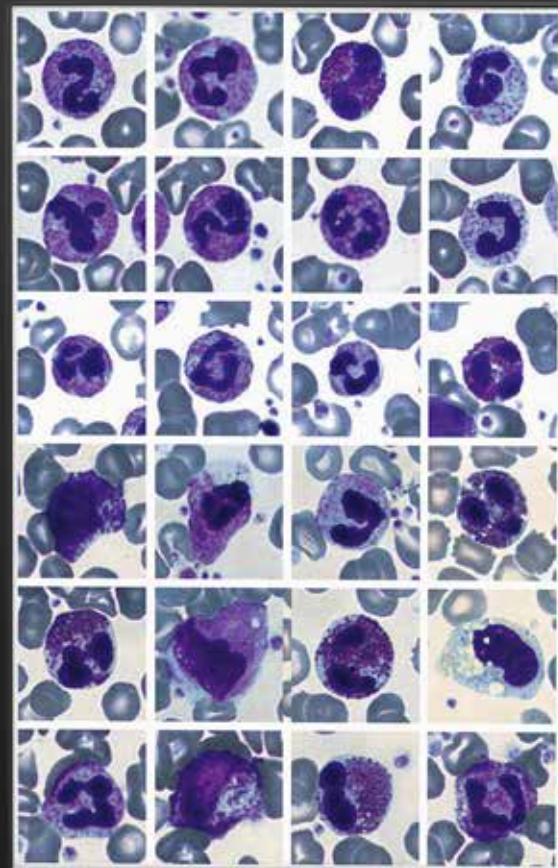
- Automated Complete Blood Count (CBC) and digital cell morphology
- Routine examination of whole blood samples and blood smears
- Fast and professional interpretation of test results
- Easy transfer, remote review and digital processing of cell images
- Maximum reliability of cell classification by eliminating the human factor
- Perfect tool for educating and qualifying lab technologists

NormaVision™ : an innovative system that changes the routine in hematology

Norma Icon™ Hematology analyzer

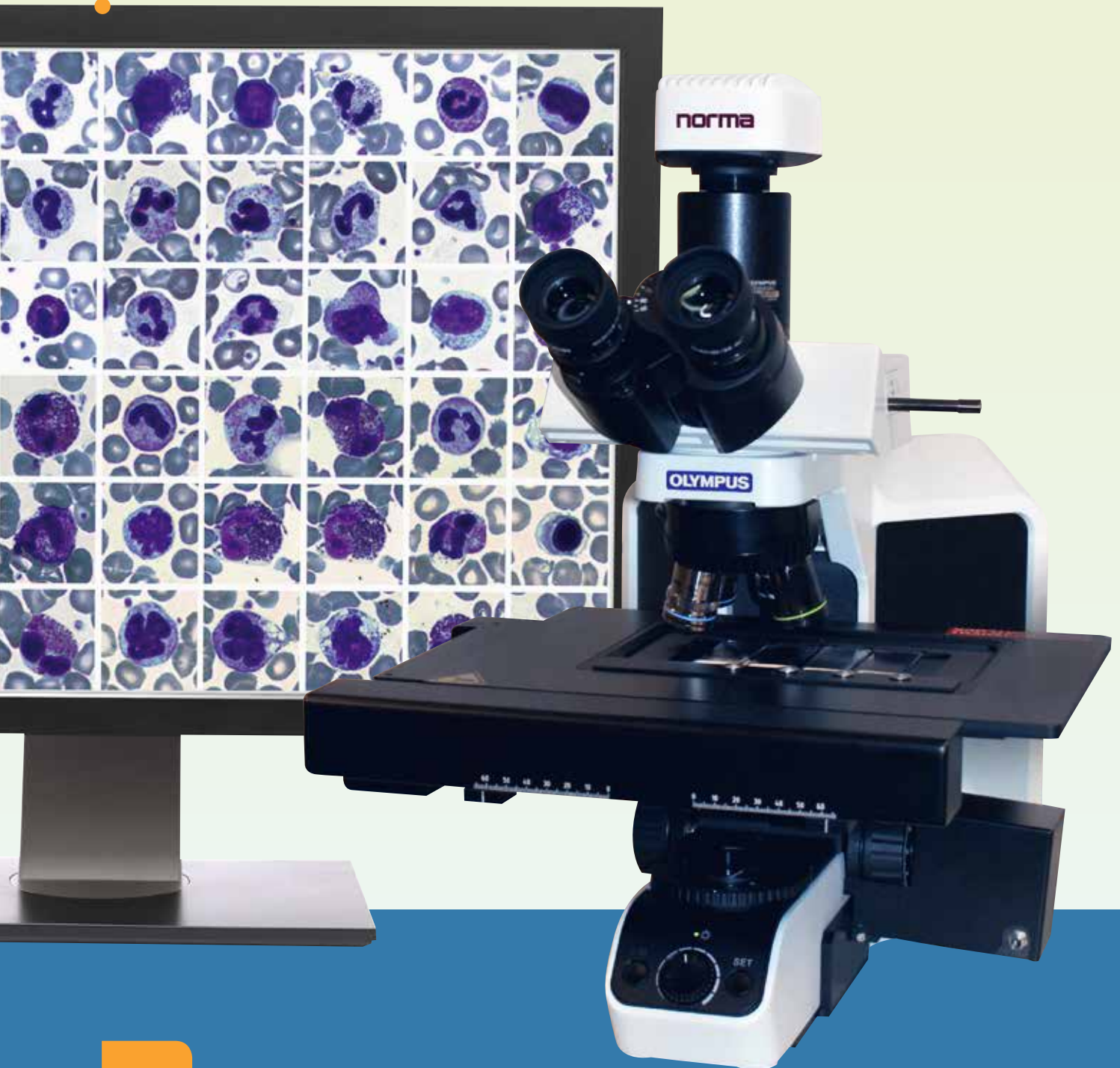
An iconic laboratory device that sets new standards in terms of features, functions and style. A unit that combines cutting edge technology with a fresh and inspiring design.

- Microfluidic technology
- Patented, innovative solutions
- Trendsetting design



NormaVision™ blood cell image analysis

Automates, digitalizes and simplifies the highly complex procedure of blood cell identification and pre-classification. CBC results obtained on Norma Icon™ hematology analyzer are automatically transferred to the optical system to provide a final, integrated test report.



Integrated hematology system for all analysis stages



Blood cell counting

Performed on **Norma Icon™** hematology analyzer for screening. Samples with «flags» are forwarded for microscopy.

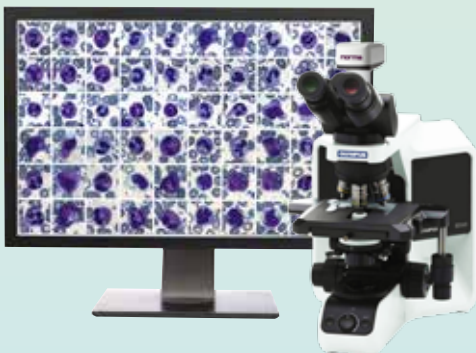


Blood smear preparation

Preparation of standardized, high quality blood smears, using **NormaSlide**.



Strict compliance with May-Grünwald Giemsa staining protocol is achieved with the help of **NormaStainer** — the automated stainer for blood smears.



Blood cell image analysis

NormaVision™ automatically identifies and pre-classifies blood cells and provides an integrated test report.

www.normadiagnostika.com

Norma Diagnostika GmbH

Hauptstr. 7, 3011 Untertullnerbach, Austria • Phone: +43 2233 52887 • Fax: +43 2233 5288 715

Norma Diagnostika GmbH reserves the right without notice to make any technical changes it considers necessary or desirable